

Millimar EMD-832P-48-W1 / EMD-832P-48-W2

Electronic Levels - Differential Level System



FEATURES

- Compare the orientation attitude of separate or adjacent horizontal surfaces
- Level systems are angular-linear compatible
- Sensing heads are interchangeable with Federal electrical spec.'s gageheads to accommodate linear measurements
- Fast response: quick response to slight angular changes permit taking fast and accurate measurements at various sensing head positions or taking dynamic position readings
- Resolution/Repeatability: Mahr Federal's Electronic Levels far exceed the sensitivity and accuracy of precision spirit levels with a resolution to 6 µin per foot (.1 arc second), compared to the spirit level's resolution of .0001" per foot. With repeatability at ±.1 arcsecond, Electronic Levels are ideal for ultra-high resolution profiling.
- Direct dimensional readout: multiplier feature permits operator to view displacement caused by the angular measurement of the level head; this is displayed as an inches per foot readout rather than arc seconds; eliminates readout confusion when switching from spirit levels to electronic levels
- Angular-linear compatible: sensing heads are easily interchangeable with Federal electrical spec.'s gageheads to accommodate linear measurements
- Electronic levels are much easier to use with an autocollimator or a laser based calibration system
- Performance is comparable and results are obtained without time consuming sight path alignments, cleaning of sensitive optical surfaces or hard to control environmental conditions
- The differential level system operates simultaneously with a single amplifier, permitting an immediate comparison between two surfaces
- Adjustable bases permit setup on surfaces that are out-of-level or square by as much as ± 1.5°
- **Package contains:** indicating instrument 832 F, 2 electronic level heads EGH-2103-W2 with 6m/20ft cable, 2 adjustable mounts EAT-1029, remote data entry handswitch with 6m / 20ft cable, power source, instruction manual, case

Application:

- Used to determine any deviation in the right angle relationship between a horizontal surface and the Earth's gravitational force (usually expressed as an angular or linear deviation from absolute level)



TECHNICAL DATA

| Order no. | | 2120550 | 2120551 |
|--------------------------|--------|--|----------------------------------|
| Product type | | EMD-832P-48-W1 | EMD-832P-48-W2 |
| Range of digital display | µm | ± 2000, ± 200, ± 20 | |
| Range of digital display | inch | ± .100", ± .010", ± .001" | |
| Range of digital display | arcsec | ± 1000 arcsec, ± 200 arcsec | |
| Range of digital display | rad | ± 1 mrad, ± 5 mrad | |
| Resolution | µm | 1, 0.1, 0.02 | |
| Resolution | inch | .0001", .00001", .000001" | |
| Resolution | arcsec | 0.1 arcsec, 1 arcsec | |
| Resolution | rad | 0.005 mrad, 0.0005 mrad | |
| Graduation value | arcsec | 50, 10 | |
| Tolerance display | | LED 5 class | LED 5 class |
| Probe inputs | | 2 | |
| Compatibility | | Federal | |
| Dynamic functions | | Max, Min, TIR, Nominal | |
| Classification | | 5 | |
| Data interface | | RS232C | |
| Control inputs | | 3 | |
| Control outputs | | 5 | |
| Analog output | | ±5VDC | |
| Energy supply | | Rechargeable battery, 10 h at full load or 120 VAC/240 VAC 50-60 Hz via AC adapter | Battery operation, 230 V / 50 Hz |
| Power supply connection | | 120 VAC 50/60Hz | 220 VAC 50/60Hz (EU) |
| Compatibility | | Federal | |

ACCESSORIES

| Order no. | Product name | Compatibility | Product type |
|-----------|---|---------------|--------------|
| 2120373 | Electronic level gagehead with 2.5 m / 8 ft cable | Federal | EGH-2013-W1 |
| 2120374 | Electronic level gagehead with 6 m / 20 ft cable | Federal | EGH-2013-W2 |
| 2120363 | Surface plate certification software | | EDD-1035 |
| 2120292 | Adjustable leveling foot | | EAT-1029 |
| 2120293 | Magnetic base | | EAT-1054 |
| 2120294 | V-base 120° (102 mm / 4") | | EAT-1055 |
| 2120295 | Right angle attachment with 120° V- faces (152 mm / 6") | | EAT-1056 |
| 2120296 | Adjustable 3-pad base (50 –203 mm / 2 –8") | | EAT-1057 |
| 2120297 | 3-pad base (50 mm / 2") | | EAT-1058 |
| 2120298 | 3-pad base (102 mm / 4") | | EAT-1059 |
| 2120299 | 3-pad base (152 mm / 6") | | EAT-1060 |
| 2120300 | Base (l= 320 mm / 12.625") with integrated 120° V ground base | | EAT-1061 |
| 2120301 | Spindle block (l= 19 mm / .750") | | EAT-1062 |



EAT-1029;
EGH-2013-W1;
EGH-2013-W2



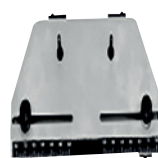
EAT-1054



EAT-1055



EAT-1056



EAT-1057



EAT-1058;
EAT-1059;
EAT-1060



EAT-1061



EAT-1062

Millimar EMD-832P-48-W1 / EMD-832P-48-W2

Electronic Levels - Differential Level System



FEATURES

- Compare the orientation attitude of separate or adjacent horizontal surfaces
- Level systems are angular-linear compatible
- Sensing heads are interchangeable with Federal electrical spec.'s gageheads to accommodate linear measurements
- Fast response: quick response to slight angular changes permit taking fast and accurate measurements at various sensing head positions or taking dynamic position readings
- Resolution/Repeatability: Mahr Federal's Electronic Levels far exceed the sensitivity and accuracy of precision spirit levels with a resolution to 6 µm per foot (.1 arc second), compared to the spirit level's resolution of .0001" per foot. With repeatability at ±.1 arc second, Electronic Levels are ideal for ultra-high resolution profiling.
- Direct dimensional readout: multiplier feature permits operator to view displacement caused by the angular measurement of the level head; this is displayed as an inches per foot readout rather than arc seconds; eliminates readout confusion when switching from spirit levels to electronic levels
- Angular-linear compatible: sensing heads are easily interchangeable with Federal electrical spec.'s gageheads to accommodate linear measurements
- Electronic levels are much easier to use with an autocollimator or a laser based calibration system
- Performance is comparable and results are obtained without time consuming sight path alignments, cleaning of sensitive optical surfaces or hard to control environmental conditions
- The differential level system operates simultaneously with a single amplifier, permitting an immediate comparison between two surfaces
- Adjustable bases permit setup on surfaces that are out-of-level or square by as much as ± 1.5°
- **Package contains:** indicating instrument 832 F, 2 electronic level heads EGH-2103-W2 with 6m/20ft cable, 2 adjustable mounts EAT-1029, remote data entry handswitch with 6m/20ft cable, power source, instruction manual, case

Application:

- Used to determine any deviation in the right angle relationship between a horizontal surface and the earth's gravitational force (usually expressed as an angular or linear deviation from absolute level)



TECHNICAL DATA

| Order no. | 2120550 | 2120551 |
|--------------------------|--|----------------------------------|
| Product type | EMD-832P-48-W1 | EMD-832P-48-W2 |
| Range of digital display | µm | ± 2000, ± 200, ± 20 |
| Range of digital display | inch | ± .100", ± .010", ± .001" |
| Range of digital display | arcsec | ± 1000 arcsec, ± 200 arcsec |
| Range of digital display | rad | ± 1 mrad, ± 5 mrad |
| Resolution | µm | 1, 0.1, 0.02 |
| Resolution | inch | .0001", .00001", .000001" |
| Resolution | arcsec | 0.1 arcsec, 1 arcsec |
| Resolution | rad | 0.005 mrad, 0.0005 mrad |
| Graduation value | arcsec | 50, 10 |
| Tolerance display | | LED 5 class |
| Probe inputs | | 2 |
| Compatibility | | Federal |
| Dynamic functions | | Max, Min, TIR, Nominal |
| Classification | | 5 |
| Data interface | | RS232C |
| Control inputs | | 3 |
| Control outputs | | 5 |
| Analog output | | ±5VDC |
| Energy supply | Rechargeable battery, 10 h at full load or 120 VAC/240 VAC 50-60 Hz via AC adapter | Battery operation, 230 V / 50 Hz |
| Power supply connection | 120 VAC 50/60Hz | 220 VAC 50/60Hz (EU) |
| Compatibility | | Federal |

ACCESSORIES

| Order no. | Product name | Compatibility | Product type |
|-----------|---|---------------|--------------|
| 2120373 | Electronic level gagehead with 2.5 m / 8 ft cable | Federal | EGH-2013-W1 |
| 2120374 | Electronic level gagehead with 6 m / 20 ft cable | Federal | EGH-2013-W2 |
| 2120363 | Surface plate certification software | | EDD-1035 |
| 2120292 | Adjustable leveling foot | | EAT-1029 |
| 2120293 | Magnetic base | | EAT-1054 |
| 2120294 | Vee base 120° (102 mm / 4") | | EAT-1055 |
| 2120295 | Right angle attachment with 120° vee faces (152 mm / 6") | | EAT-1056 |
| 2120296 | Adjustable 3-pad base (50 -203 mm / 2 -8") | | EAT-1057 |
| 2120297 | 3-pad base (50 mm / 2") | | EAT-1058 |
| 2120298 | 3-pad base (102 mm / 4") | | EAT-1059 |
| 2120299 | 3-pad base (152 mm / 6") | | EAT-1060 |
| 2120300 | Base (l= 320 mm / 12.625") with integrated 120° vee ground base | | EAT-1061 |
| 2120301 | Spindle block (l= 19 mm / .750") | | EAT-1062 |



EAT-1054



EAT-1062



EAT-1055



EAT-1056



EAT-1057



EAT-1058;
EAT-1059;
EAT-1060



EAT-1061



EAT-1029;
EGH-2013-W1;
EGH-2013-W2